

# CORONET<sup>®</sup>

High Quality Surgical Products for  
Cornea Graft Surgery

PK | DALK | DSAEK | DMEK



[innoviamedical.com/](http://innoviamedical.com/)

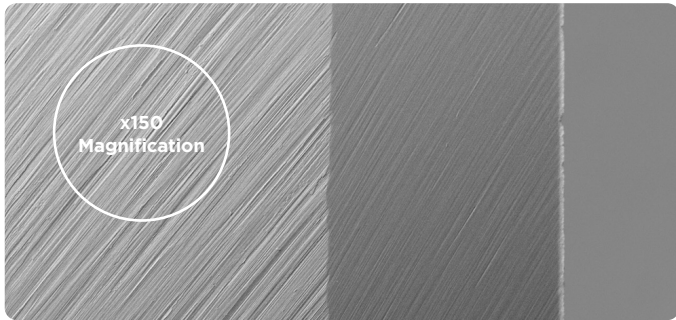
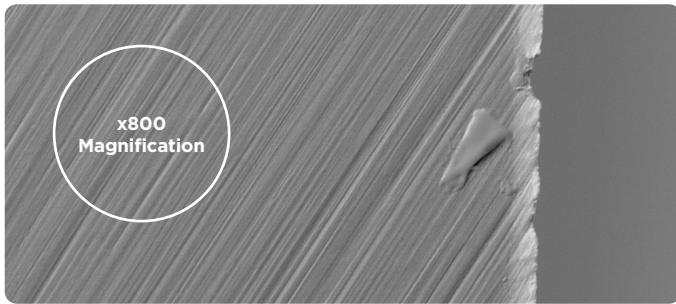
**OPHTHALMOLOGY**

# REASONS TO CHOOSE CORONET

The most important part of any trephine is the blade. **Exclusive CORONET® blade technology creates a precise and ultrasharp trephine.**

## TRADITIONAL TREPHINE

Standard Blade Technology

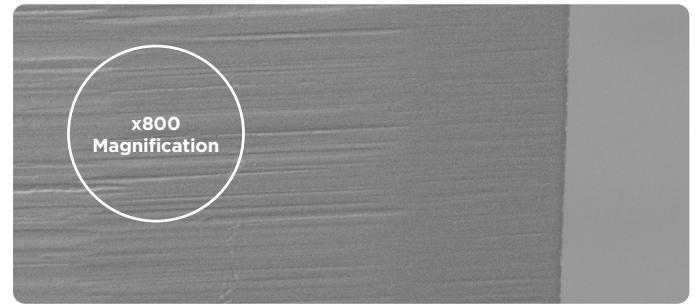


**Rough trephine blade edge with imperfect finish**  
**Single bevelled blade edge on the outside only:**

- X Distorts the tissue and creates undercut
- X Retains donor graft
- X Compromises on quality

## CORONET® TREPHINE

Blade Technology



**Sharp trephine blade edge, double bevelled and multifaceted structure intended to:**

- ✓ Improve wound architecture
- ✓ Provide reliable and consistent incisions
- ✓ Reduce endothelial cell loss

# CORONET®

## RECIPIENT TREPHINES



STERILE EO



## RECIPIENT TREPHINES



Features	Recipient Vacuum Trephine 51-840*	PK Clear-Vue™ Recipient Vacuum Trephine 51-842*	DALK Clear-Vue™ Recipient Vacuum Trephine (300µm) 51-844
Ultrathin and Sharp Blade	•	•	•
Straight Walled Cut	•	•	•
Precision Cross Hair	•	•	•
Ergonomic Finger Grips	•	•	•
Marker Pin for Blade Progression	•	•	•
Windows for 360° Visual		•	•
Adaptive Vacuum Skirt		•	•
Transparent Body		•	•
Patent Protected		•	•
Shelf Life	5 Years	3 Years	3 Years
PK	•	•	
DALK			•

Products (mm)	6.50	6.75	7.00	7.25	7.50	7.75	8.00	8.25	8.50	8.75	9.00	9.25	9.50
51-840*	•	•	•	•	•	•	•	•	•	•	•		•
51-842*	•	•	•	•	•	•	•	•	•	•	•		•
51-844					•		•		•		•		

\*Blade progression 0.063mm downward per quarter turn and 0.252mm per full rotation

# CORONET®

## DONOR PUNCHES



STERILE EO



5 Year Shelf Life



## DONOR PUNCHES



Features	Donor Trephine Vacuum Punch 51-835	Donor Trephine Punch 51-850	DMEK Guarded Trephine Punch 51-855
Ultrathin and Sharp Blade	•	•	•
Straight Walled Cut	•	•	•
Windows for 360° Visual	•	•	•
Stable Platform Base	•	•	•
Anatomically Shaped Bowl	•	•	•
Protective Dust Cover	•	•	
Vacuum Function	•		•
Free Rotating Trephine	•	•	•
Patent Protected	•	•	•
Non-Glare Head	•	•	•
<b>PK</b>	•	•	
<b>DALK</b>	•	•	
<b>DSAEK/DSEK</b>	•	•	
<b>DMEK</b>	•	•	•

Products (mm)	6.00	6.25	6.50	6.75	7.00	7.25	7.50	7.75	8.00	8.25	8.50	8.75	9.00	9.25	9.50	9.75	10.0
<b>51-835</b>	•	•	•	•	•	•	•	•	•	•	•	•	•	•	•	•	
<b>51-850</b>	•	•	•	•	•	•	•	•	•	•	•	•	•	•	•	•	
<b>51-855</b>							•		•		•		•		•		•

# CORONET<sup>®</sup>

## TREPHINES



STERILE EO



5 Year  
Shelf Life



## TREPHINES



Features	Guarded Trephine (300µm) 51-860	Guarded Trephine (400µm) 51-865	Standard Trephine 51-900	Standard Trephine with Cross Hair 51-901	Long Handled Trephine 51-903	Exactor Trephine 51-905
Ultrathin and Sharp Blade	•	•	•	•	•	
Straight Walled Cut	•	•	•	•	•	
Guarded Blade	•	•				
Non-Glare Head	•	•	•	•	•	
Precision Crosshair	•	•		•		
Ergonomically Balanced	•	•	•	•	•	•
<b>PK</b>			•	•	•	
<b>DALK</b>	•	•	•	•	•	
<b>DMEK</b>	•	•				
<b>Eye Bank Recovery</b>						•

Products (mm)	6.00	6.25	6.50	6.75	7.00	7.25	7.50	7.75	8.00	8.25	8.50	8.75	9.00	9.25	9.50	9.75	10.0	15.0	17.0	18.0	20.0	
<b>51-860</b>					•		•		•		•											
<b>51-865</b>					•		•		•		•											
<b>51-900</b>	•	•	•	•	•	•	•	•	•	•	•	•	•	•	•	•						
<b>51-901</b>	•	•	•	•	•	•	•	•	•	•	•	•	•	•	•	•						
<b>51-903</b>	•	•	•	•	•	•	•	•	•	•	•	•	•	•	•	•	•					
<b>51-905</b>																		•	•	•	•	



# CORONET<sup>®</sup>

## ENDOGLIDE<sup>™</sup>



STERILE EO



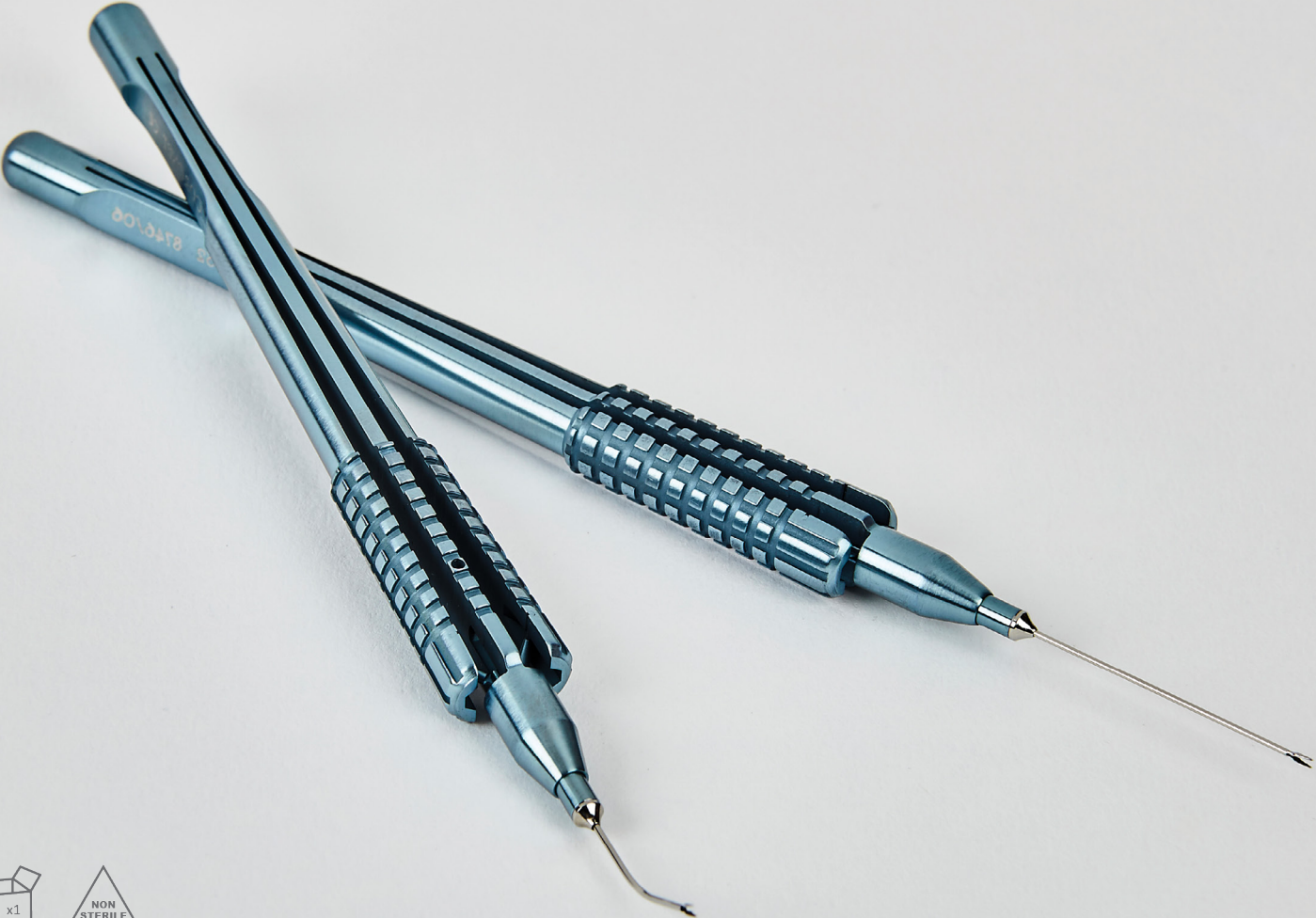
## ENDOGLIDE



Features	EndoGlide™ Ultrathin 51-823	DMEK EndoGlide™ 51-826
Paracentesis Pull-Through Approach	•	•
Closed Cartridge System	•	•
Reduced Endothelial Cell Loss	•	•
Forcep Guide Bridge	•	•
2.65mm Clear Corneal Incision		•
4.5mm Scleral Tunnel Incision	•	
4.9mm Clear Corneal Incision	•	
Double Coil Technique	•	
Tri-Fold Technique		•
Patent Protected	•	•
<b>DSAEK/DSEK</b>	•	
<b>DMEK</b>		•
<b>Eye Bank Preload</b>	•	•

# CORONET®

## ENDOGLIDE™ FORCEPS



## ENDOGLIDE FORCEPS



Features	Tan EndoGlide™ Placement Forceps (23G) 53-951	EndoGlide™ Placement Forceps (27G) 53-955	Tan EndoGlide™ Loading Forceps (23G) 53-952	EndoGlide™ Loading Forceps (27G) 53-956
Lightweight Handle	•	•	•	•
Ergonomically Balanced	•	•	•	•
Titanium	•	•	•	•
Graft Loading			•	•
Graft Placement	•	•		
1mm Wide Jaws	•	•	•	•
23G	•		•	
27G		•		•
Reusable	•	•	•	•
<b>DSAEK/DSEK</b>	•	•	•	•
<b>DMEK</b>	•	•	•	•

**CORONET<sup>®</sup>**

**ARTIFICIAL ANTERIOR CHAMBER**









## AAC & SURGICAL TRAINERS






Features	Artificial Anterior Chamber 51-935*	Surgical Trainer 51-3000	Surgical Trainer Refill Kit 51-3010
Small Tissue Retainer 14.5 - 16.0mm	•		
Large Tissue Retainer 16.0 - 18.0mm	•	•	
Precision Cross Hair	•		
Weighted Platform Base	•	•	
Luer Lock	•	•	•
Manual Trephine Compatible	•		
Femtosecond Laser Compatible	•		
Reusable Training Unit		•	
Supplied Non-Sterile		•	•
Per Box	1	1	10
<b>PK</b>	•	•	•
<b>DALK</b>	•	•	•
<b>DSAEK/DSEK</b>	•	•	•
<b>DMEK</b>	•	•	•




\*51-935 is sold sterile, single use with a 5 year shelf life

Product	Size	Code	Per Box	 Shelf Life			CORONET® Technology	PK	DALK	DSA EK/ DSEK	DMEK
<b>Recipient Vacuum Trepine 51-840</b>	6.50	51-840-6.50MM	1	5	•	•	•	•			
	6.75	51-840-6.75MM	1	5	•	•	•	•			
	7.00	51-840-7.00MM	1	5	•	•	•	•			
	7.25	51-840-7.25MM	1	5	•	•	•	•			
	7.50	51-840-7.50MM	1	5	•	•	•	•			
	7.75	51-840-7.75MM	1	5	•	•	•	•			
	8.00	51-840-8.00MM	1	5	•	•	•	•			
	8.25	51-840-8.25MM	1	5	•	•	•	•			
	8.50	51-840-8.50MM	1	5	•	•	•	•			
	8.75	51-840-8.75MM	1	5	•	•	•	•			
	9.00	51-840-9.00MM	1	5	•	•	•	•			
9.50	51-840-9.50MM	1	5	•	•	•	•				
<b>PK Clear-Vue™ Recipient Vacuum Trepine 51-842</b>	6.50	51-842-6.50MM	1	3	•	•	•	•			
	6.75	51-842-6.75MM	1	3	•	•	•	•			
	7.00	51-842-7.00MM	1	3	•	•	•	•			
	7.25	51-842-7.25MM	1	3	•	•	•	•			
	7.50	51-842-7.50MM	1	3	•	•	•	•			
	7.75	51-842-7.75MM	1	3	•	•	•	•			
	8.00	51-842-8.00MM	1	3	•	•	•	•			
	8.25	51-842-8.25MM	1	3	•	•	•	•			
	8.50	51-842-8.50MM	1	3	•	•	•	•			
	8.75	51-842-8.75MM	1	3	•	•	•	•			
	9.00	51-842-9.00MM	1	3	•	•	•	•			
9.50	51-842-9.50MM	1	3	•	•	•	•				
<b>DALK Clear-Vue™ Recipient Vacuum Trepine (300µm) 51-844</b>	7.50	51-844-7.50MM	1	3	•	•	•		•		
	8.00	51-844-8.00MM	1	3	•	•	•		•		
	8.50	51-844-8.50MM	1	3	•	•	•		•		
	9.00	51-844-9.00MM	1	3	•	•	•		•		

Product	Size	Code	Per Box	 Shelf Life			CORONET® Technology	PK	DALK	DSAEK/DSEK	DMEK
<b>Donor Trephine Vacuum Punch 51-835</b>	6.00	51-835-6.00MM	1	5	•	•	•	•	•	•	•
	6.25	51-835-6.25MM	1	5	•	•	•	•	•	•	•
	6.50	51-835-6.50MM	1	5	•	•	•	•	•	•	•
	6.75	51-835-6.75MM	1	5	•	•	•	•	•	•	•
	7.00	51-835-7.00MM	1	5	•	•	•	•	•	•	•
	7.25	51-835-7.25MM	1	5	•	•	•	•	•	•	•
	7.50	51-835-7.50MM	1	5	•	•	•	•	•	•	•
	7.75	51-835-7.75MM	1	5	•	•	•	•	•	•	•
	8.00	51-835-8.00MM	1	5	•	•	•	•	•	•	•
	8.25	51-835-8.25MM	1	5	•	•	•	•	•	•	•
	8.50	51-835-8.50MM	1	5	•	•	•	•	•	•	•
	8.75	51-835-8.75MM	1	5	•	•	•	•	•	•	•
	9.00	51-835-9.00MM	1	5	•	•	•	•	•	•	•
	9.25	51-835-9.25MM	1	5	•	•	•	•	•	•	•
	9.50	51-835-9.50MM	1	5	•	•	•	•	•	•	•
9.75	51-835-9.75MM	1	5	•	•	•	•	•	•	•	
<b>Donor Trephine Punch 51-850</b>	6.00	51-850-6.00MM	1	5	•	•	•	•	•	•	•
	6.25	51-850-6.25MM	1	5	•	•	•	•	•	•	•
	6.50	51-850-6.50MM	1	5	•	•	•	•	•	•	•
	6.75	51-850-6.75MM	1	5	•	•	•	•	•	•	•
	7.00	51-850-7.00MM	1	5	•	•	•	•	•	•	•
	7.25	51-850-7.25MM	1	5	•	•	•	•	•	•	•
	7.50	51-850-7.50MM	1	5	•	•	•	•	•	•	•
	7.75	51-850-7.75MM	1	5	•	•	•	•	•	•	•
	8.00	51-850-8.00MM	1	5	•	•	•	•	•	•	•
	8.25	51-850-8.25MM	1	5	•	•	•	•	•	•	•
	8.50	51-850-8.50MM	1	5	•	•	•	•	•	•	•
	8.75	51-850-8.75MM	1	5	•	•	•	•	•	•	•
	9.00	51-850-9.00MM	1	5	•	•	•	•	•	•	•
	9.25	51-850-9.25MM	1	5	•	•	•	•	•	•	•
	9.50	51-850-9.50MM	1	5	•	•	•	•	•	•	•
9.75	51-850-9.75MM	1	5	•	•	•	•	•	•	•	



Product	Size	Code	Per Box	 Shelf Life			CORONET® Technology	PK	DALK	DSAEK/DSEK	DMEK
<b>DMEK Guarded Trephine Punch 51-855</b>	7.50	51-855-7.50MM	1	5	•	•	•				•
	8.00	51-855-8.00MM	1	5	•	•	•				•
	8.50	51-855-8.50MM	1	5	•	•	•				•
	9.00	51-855-9.00MM	1	5	•	•	•				•
	9.50	51-855-9.50MM	1	5	•	•	•				•
	10.0	51-855-10.00MM	1	5	•	•	•				•
<b>Guarded Trephine (300µm) 51-860</b>	7.00	51-860-7.00MM	1	5	•	•	•		•		•
	7.50	51-860-7.50MM	1	5	•	•	•		•		•
	8.00	51-860-8.00MM	1	5	•	•	•		•		•
	8.50	51-860-8.50MM	1	5	•	•	•		•		•
<b>Guarded Trephine (400µm) 51-865</b>	7.00	51-865-7.00MM	1	5	•	•	•		•		•
	7.50	51-865-7.50MM	1	5	•	•	•		•		•
	8.00	51-865-8.00MM	1	5	•	•	•		•		•
	8.50	51-865-8.50MM	1	5	•	•	•		•		•
<b>Long Handled Trephine 51-903</b>	6.00	51-903-6.00MM	1	5	•	•	•	•	•		
	6.25	51-903-6.25MM	1	5	•	•	•	•	•		
	6.50	51-903-6.50MM	1	5	•	•	•	•	•		
	6.75	51-903-6.75MM	1	5	•	•	•	•	•		
	7.00	51-903-7.00MM	1	5	•	•	•	•	•		
	7.25	51-903-7.25MM	1	5	•	•	•	•	•		
	7.50	51-903-7.50MM	1	5	•	•	•	•	•		
	7.75	51-903-7.75MM	1	5	•	•	•	•	•		
	8.00	51-903-8.00MM	1	5	•	•	•	•	•		
	8.25	51-903-8.25MM	1	5	•	•	•	•	•		
	8.50	51-903-8.50MM	1	5	•	•	•	•	•		
	8.75	51-903-8.75MM	1	5	•	•	•	•	•		
	9.00	51-903-9.00MM	1	5	•	•	•	•	•		
	9.25	51-903-9.25MM	1	5	•	•	•	•	•		
	9.50	51-903-9.50MM	1	5	•	•	•	•	•		
	9.75	51-903-9.75MM	1	5	•	•	•	•	•		
10.0	51-903-10.00MM	1	5	•	•	•	•	•			

Product	Size	Code	Per Box	 Shelf Life			CORONET® Technology	PK	DALK	DSAEK/DSEK	DMEK
<b>Exactor Trepine 51-905</b>	15.0	51-905-15.00MM	1	5	•	•					
	17.0	51-905-17.00MM	1	5	•	•					
	18.0	51-905-18.00MM	1	5	•	•					
	20.0	51-905-20.00MM	1	5	•	•					
<b>Artificial Anterior Chamber 51-935</b>		51-935	1	5	•	•		•	•	•	•
<b>Surgical Trainer 51-3000</b>		51-3000	1					•	•	•	•
<b>Surgical Trainer Refill Kit 51-3010</b>		51-3010	10		•					•	•
<b>EndoGlide™ Ultrathin 51-823</b>		51-823	1	5	•	•				•	
<b>DMEK Endoglide™ 51-826</b>		51-826	1	5	•	•					•
<b>Tan EndoGlide™ Placement Forceps (23G) 53-951</b>	23G	53-951	1							•	•
<b>EndoGlide™ Placement Forceps (27G) 53-955</b>	27G	53-955	1							•	•
<b>Tan EndoGlide™ Loading Forceps (23G) 53-952</b>	23G	53-952	1							•	•
<b>Endoglide™ Loading Forceps (27G) 53-956</b>	27G	53-956	1							•	•